

EMC TEST REPORT
For

Hebei Young Will Health Technology Co., Ltd.

Jelly Rabbit Vibrator

Model No.: 85450001

Prepared for : Hebei Young Will Health Technology Co., Ltd.
Address : CN,Hebei,Shijiazhuang,1804, Block A, Haiyue International
Office Building, No. 66 Yuhua West Road

Prepared by : Shenzhen BTL Testing Technology Co., Ltd.
Address : Room 201, Building 1, Anxu Business Park, No. 35-1, Xiangyin
Road, Nanlian Community, Longgang Street, Longgang District,
Shenzhen

Web : [Http://www.beidelab.com](http://www.beidelab.com)
Mail : beide@beidelab.com

Date of receipt of test sample : Feb. 21, 2025
Number of tested samples : 1
Serial number : Prototype
Date of Test : Feb. 21, 2025 – Feb. 25, 2025
Date of Report : Feb. 25, 2025



EMC TEST REPORT

EN IEC 55014-1:2021

Requirements for household appliances, electric tools and similar apparatus -- Part 1: Emission

EN IEC 55014-2:2021

Requirements for household appliances, electric tools and similar apparatus -- Part 2: Immunity - Product family standard

Report Reference No.: BTL20250221044E01

Date Of Issue.....: Feb. 25, 2025

Testing Laboratory Name: Shenzhen BTL Testing Technology Co., Ltd.

Address.....: Room 201, Building 1, Anxu Business Park, No. 35-1, Xiangyin Road, Nanlian Community, Longgang Street, Longgang District, Shenzhen

Testing Location/ Procedure: Full application of Harmonised standards
 Partial application of Harmonised standards
 Other standard testing method

Applicant's Name.....: Hebei Young Will Health Technology Co., Ltd.

Address.....: CN,Hebei,Shijiazhuang,1804, Block A, Haiyue International Office Building, No. 66 Yuhua West Road

Test Specification:

Standard: EN IEC 55014-1:2021
 EN IEC 55014-2:2021

Test Report Form No.: BTLEMC-1.0

TRF Originator.....: Shenzhen BTL Testing Technology Co., Ltd.

Master TRF: Dated 2016-03

SHENZHEN BTL TESTING TECHNOLOGY CO., LTD. All rights reserved.

This publication may be reproduced in whole or in part for non-commercial purposes as long as the SHENZHEN BTL TESTING TECHNOLOGY CO., LTD. is acknowledged as copyright owner and source of the material. SHENZHEN BTL TESTING TECHNOLOGY CO., LTD. takes no responsibility for and will not assume liability for damages resulting from the reader's interpretation of the reproduced material due to its placement and context.

Test Item Description.....: Jelly Rabbit Vibrator

Trade Mark.....: N/A

Model/ Type Reference.....: 85450001

Ratings: Input: DC5V==
 Battery: 3.7V, 500mAh, 1.85Wh

Result: Positive

Compiled by:

Rose Fang

Rose Fang / File administrators

Supervised by:

Jane He

Jane He/ Technique principal

Approved by:

J

July Yan / Manager



EMC -- TEST REPORT**Test Report No. : BTL20250221044E01**Feb. 25, 2025

Date of issue

Type / Model..... : 85450001

EUT..... : Jelly Rabbit Vibrator

Applicant..... : Hebei Young Will Health Technology Co., Ltd.Address..... : CN,Hebei,Shijiazhuang,1804, Block A, Haiyue International
Office Building, No. 66 Yuhua West Road

Telephone..... : /

Fax..... : /

Manufacturer..... : Hebei Young Will Health Technology Co., Ltd.Address..... : CN,Hebei,Shijiazhuang,1804, Block A, Haiyue International
Office Building, No. 66 Yuhua West Road

Telephone..... : /

Fax..... : /

Factory..... : Hebei Young Will Health Technology Co., Ltd.Address..... : CN,Hebei,Shijiazhuang,1804, Block A, Haiyue International
Office Building, No. 66 Yuhua West Road

Telephone..... : /

Fax..... : /

Test Result according to the standards on page 7:**Positive**

The test report merely corresponds to the test sample.

It is not permitted to copy extracts of these test result without the written permission of the test laboratory.

TABLE OF CONTENT

Test Report Description	Page
1. SUMMARY OF STANDARN/A AND RESULTS.....	5
1.1.Description of Standards and Results	5
1.2.Description of Performance Criteria.....	6
2. GENERAL INFORMATION	7
2.1.Description of Device (EUT).....	7
2.2.Test Facility	7
2.3.Statement of the measurement uncertainty	7
2.4.Measurement Uncertainty.....	7
3. MEASURING DEVICES AND TEST EQUIPMENT	8
3.1.Conducted Disturbance.....	8
3.2.Disturbance Power.....	8
3.3.Radiated Electromagnetic Disturbance.....	8
3.4.Radiated Disturbance (Electric Field)	8
3.5.Harmonic Current	8
3.6.Voltage fluctuation and Flicker	8
3.7.Electrostatic Discharge	9
3.8.RF Field Strength Susceptibility.....	9
3.9.Electrical Fast Transient/Burst	9
3.10.Surge.....	9
3.11.Conducted Susceptibility	9
3.12.Power Frequency Magnetic Field Susceptibility	9
3.13.Voltage Dips	10
3.14.Voltage Short Interruptions	10
4. RADIATED EMISSION MEASUREMENT	11
4.1.Block Diagram of Test Setup	11
4.2.Test Standard	11
4.3.Radiated Emission Limits.....	11
4.4.EUT Configuration on Test	12
4.5.Operating Condition of EUT	12
4.6.Test Procedure	12
4.7.Test Results.....	12
5. ELECTROSTATIC DISCHARGE IMMUNITY TEST.....	15
5.1.Block Diagram of Test Setup	15
5.2.Test Standard	15
5.3.Severity Levels and Performance Criterion.....	15
5.4.EUT Configuration on Test	15
5.5.Operating Condition of EUT	16
5.6.Test Procedure	16
5.7.Test Results.....	16
6. PHOTOGRAPH.....	18
7. EXTERNAL AND INTERNAL PHOTOS OF THE EUT.....	19
8. MANUFACTURER/ APPROVAL HOLDER DECLARATION	23

1. SUMMARY OF STANDARDS AND RESULTS

1.1. Description of Standards and Results

The EUT have been tested according to the applicable standards as referenced below.

EMISSION (EN IEC 55014-1:2021)			
Description of Test Item	Standard	Limits	Results
Conducted disturbance at mains terminals	EN IEC 55014-1:2021	-----	PASS
Clicks measurement	EN IEC 55014-1:2021	-----	PASS
Disturbance Power	EN IEC 55014-1:2021	-----	PASS
Radiated disturbance	EN 55032:2015/A11:2020	-----	N/A
Harmonic current emissions	EN IEC 61000-3-2:2019/A1:2021	Class A	N/A
Voltage fluctuations & flicker	EN 61000-3-3:2013/A2:2021	-----	N/A
IMMUNITY (EN IEC 55014-2:2021)			
Description of Test Item	Basic Standard	Performance Criteria	Results
Electrostatic discharge (ESD)	EN 61000-4-2:2009	B	PASS
Radio-frequency, Continuous radiated disturbance	EN 61000-4-3:2006/A2:2010	A	N/A
Electrical fast transient (EFT)	EN 61000-4-4:2012	B	PASS
Surge (Input a.c. power ports)	EN 61000-4-5:2014/A1: 2017	B	PASS
Radio-frequency, Continuous conducted disturbance	EN 61000-4-6:2014/AC:2015	A	PASS
Power frequency magnetic field	EN 61000-4-8:2010	A	N/A
Voltage dips, 60% reduction	EN IEC 61000-4-11:2020	C	PASS
Voltage dips, 30% reduction		C	PASS
Voltage interruptions		C	PASS
N/A is an abbreviation for Not Applicable.			

1.2. Description of Performance Criteria

General Performance Criteria

Examples of functions defined by the manufacturer to be evaluated during testing include, but are not limited to, the following:

- essential operational modes and states;
- tests of all peripheral access (hard disks, floppy disks, printers, keyboard, mouse, etc.);
- quality of software execution;
- quality of data display and transmission;
- quality of speech transmission.

1.2.1. Performance criterion A

The equipment shall continue to operate as intended without operator intervention. No degradation of performance or loss of function is allowed below a performance level specified by the manufacture when the equipment is used as intended. The performance level may be replaced by a permissible loss of performance. If the minimum performance level or the permissible performance loss is not specified by the manufacturer, then either of these may be derived from the product description and documentation, and by what the user may reasonably expect from the equipment if used as intended.

1.2.2. Performance criterion B

After the test, the equipment shall continue to operate as intended without operator intervention. No degradation of performance or loss of function is allowed, after the application of the phenomena below a performance level specified by the manufacture, when the equipment is used as intended. The performance level may be replaced by a permissible loss of performance.

During the test, degradation of performance is allowed. However, no change of operation state or stored data is allowed to persist after the test.

If the minimum performance level (or the permissible performance loss) is not specified by the manufacturer, then either of these may be derived from the product description and documentation, and by what the user may reasonably expect from the equipment if used as intended.

1.2.3. Performance criterion C

Loss of function is allowed, provided the function is self-recoverable, or can be restored by the operation of the controls by the user in accordance with the manufacture's instructions.

Functions, and/or information stored in non-volatile memory, or protected by a battery backup, shall not be lost.

2. GENERAL INFORMATION

2.1. Description of Device (EUT)

EUT : Jelly Rabbit Vibrator

Model Number : 85450001

Power Supply : Input: DC5V==
: Battery: 3.7V, 500mAh, 1.85Wh

EUT Clock Frequency : $\leq 15\text{MHz}$

2.2. Test Facility

Site Description

EMC Lab. : Shenzhen BTL Testing Technology Co., Ltd.
Add. : Room 201, Building 1, Anxu Business Park, No. 35-1, Xiangyin Road, Nanlian Community, Longgang Street, Longgang District, Shenzhen

Our laboratories are accredited and approved by the following approval agencies according to ISO/IEC 17025.
FCC Registration Number: 802773;
IC Registration Number: 010276817-001

2.3. Statement of the measurement uncertainty

The data and results referenced in this document are true and accurate. The reader is cautioned that there may be errors within the calibration limits of the equipment and facilities. The measurement uncertainty was calculated for all measurements listed in this test report acc. To CISPR 16 – 4 “Specification for radio disturbance and immunity measuring apparatus and methods – Part 4: Uncertainty in EMC Measurements” and is documented in the BTL quality system acc. To DIN EN ISO/IEC 17025. Furthermore, component and process variability of devices similar to that tested may result in additional deviation. The manufacturer has the sole responsibility of continued compliance of the device.

2.4. Measurement Uncertainty

Test Item	Frequency Range	Uncertainty	Note
Radiation Uncertainty	30MHz~200MHz	$\pm 2.96\text{dB}$	(1)
	200MHz~1000MHz	$\pm 3.10\text{dB}$	(1)
Conduction Uncertainty	150kHz~30MHz	$\pm 1.63\text{dB}$	(1)
Power disturbance	30MHz~300MHz	$\pm 1.60\text{dB}$	(1)

(1). This uncertainty represents an expanded uncertainty expressed at approximately the 95% confidence level using a coverage factor of $k=2$.

3. MEASURING DEVICES AND TEST EQUIPMENT

3.1. Conducted Disturbance

Item	Test Equipment	Manufacturer	Model No.	Serial No.	Last Cal.
1	EMI Test Receiver	ROHDE & SCHWARZ	ESCI	101142	2024/06/18
2	EMI Test Receiver	ROHDE & SCHWARZ	ESPI	101840	2024/06/18
3	Artificial Mains	ROHDE & SCHWARZ	ENV216	101288	2024/06/18
4	EMI Test Software	AUDIX	E3	N/A	2024/06/18

3.2. Disturbance Power

Item	Test Equipment	Manufacturer	Model No.	Serial No.	Last Cal.
1	EMI Test Receiver	ROHDE & SCHWARZ	ESCI	101142	2024/06/18
2	EMI Test Receiver	ROHDE & SCHWARZ	ESPI	101840	2024/06/18
3	Absorbing clamp	ROHDE & SCHWARZ	MN/A 21	4033	2024/06/18
4	EMI Test Software	AUDIX	E3	N/A	2024/06/18

3.3. Radiated Electromagnetic Disturbance

Item	Test Equipment	Manufacturer	Model No.	Serial No.	Last Cal.
1	EMI Test Receiver	ROHDE & SCHWARZ	ESCI	101142	2024/06/18
2	Triple-loop Antenna	EVERFINE	LLA-2	11050003	2024/06/18
3	EMI Test Receiver	ROHDE & SCHWARZ	ESPI	101840	2024/06/18
4	EMI Test Software	AUDIX	E3	N/A	2024/06/18

3.4. Radiated Disturbance (Electric Field)

Item	Test Equipment	Manufacturer	Model No.	Serial No.	Last Cal.
1	EMI Test Receiver	ROHDE & SCHWARZ	ESCI	101142	2024/06/18
2	EMI Test Receiver	ROHDE & SCHWARZ	ESPI	101840	2024/06/18
3	Log per Antenna	SCHWARZBECK	VULB9163	9163-470	2024/06/21
4	Amplifier	Compliance Direction	PAP-0102	21001	2024/06/18
5	Spectrum Analyzer	Agilent	E4407B	MY41440754	2024/06/18
6	Horn Antenna	ETS.LINDGREN	3115	00034771	2024/06/18
7	EMI Test Software	AUDIX	E3	N/A	2024/06/18

3.5. Harmonic Current

Item	Test Equipment	Manufacturer	Model No.	Serial No.	Last Cal.
1	Power Analyzer Test System	Voltech	PM6000	20000670053	2024/06/18

3.6. Voltage fluctuation and Flicker

Item	Test Equipment	Manufacturer	Model No.	Serial No.	Last Cal.
1	Power Analyzer Test System	Voltech	PM6000	20000670053	2024/06/18

3.7. Electrostatic Discharge

Item	Test Equipment	Manufacturer	Model No.	Serial No.	Last Cal.
1	ESD Simulator	KIKUSUI	KC001311	KES4021	2024/06/19

3.8. RF Field Strength Susceptibility

Item	Test Equipment	Manufacturer	Model No.	Serial No.	Last Cal.
1	SIGNAL GENERATOR	HP	8648A	625U00573	2024/06/18
2	Amplifier	AR	500A100	17034	2024/06/18
3	Amplifier	AR	100W/1000M 1	17028	2024/06/18
4	Isotropic Field Monitor	AR	FM2000	16829	2024/06/18
5	Isotropic Field Probe	AR	FP2000	16755	2024/06/18
6	Bi-conic Antenna	EMCO	3108	9507-2534	2024/06/19
7	By-log-periodic Antenna	AR	AT1080	16812	2024/06/19
8	EMS Test Software	ROHDE & SCHWARZ	ESK1	N/A	2024/06/19

3.9. Electrical Fast Transient/Burst

Item	Test Equipment	Manufacturer	Model No.	Serial No.	Last Cal.
1	Electrical fast transient(EFT)generator	3CTEST	EFT-4021	EC0461044	2024/06/18
2	Coupling Clamp	3CTEST	EFTC	EC0441098	2024/06/18

3.10. Surge

Item	Test Equipment	Manufacturer	Model No.	Serial No.	Last Cal.
1	Surge test system	3CTEST	SG-5006G	EC5581070	2024/06/18
2	Coupling/decoupling network	3CTEST	SGN-5010G	ECS5591033	2024/06/18

3.11. Conducted Susceptibility

Item	Test Equipment	Manufacturer	Model No.	Serial No.	Last Cal.
1	Conducted Immunity Test System	FRANKONIA	CIT-10	126A1195	2024/06/18
2	Coupling/decoupling network	FRANKONIA	CDN-M2+M3	A2210177	2024/06/18

3.12. Power Frequency Magnetic Field Susceptibility

Item	Test Equipment	Manufacturer	Model No.	Serial No.	Last Cal.
1	Power frequency mag-field generator System	EVERFINE	EMS61000-8 K	906003	2024/06/18

3.13. Voltage Dips

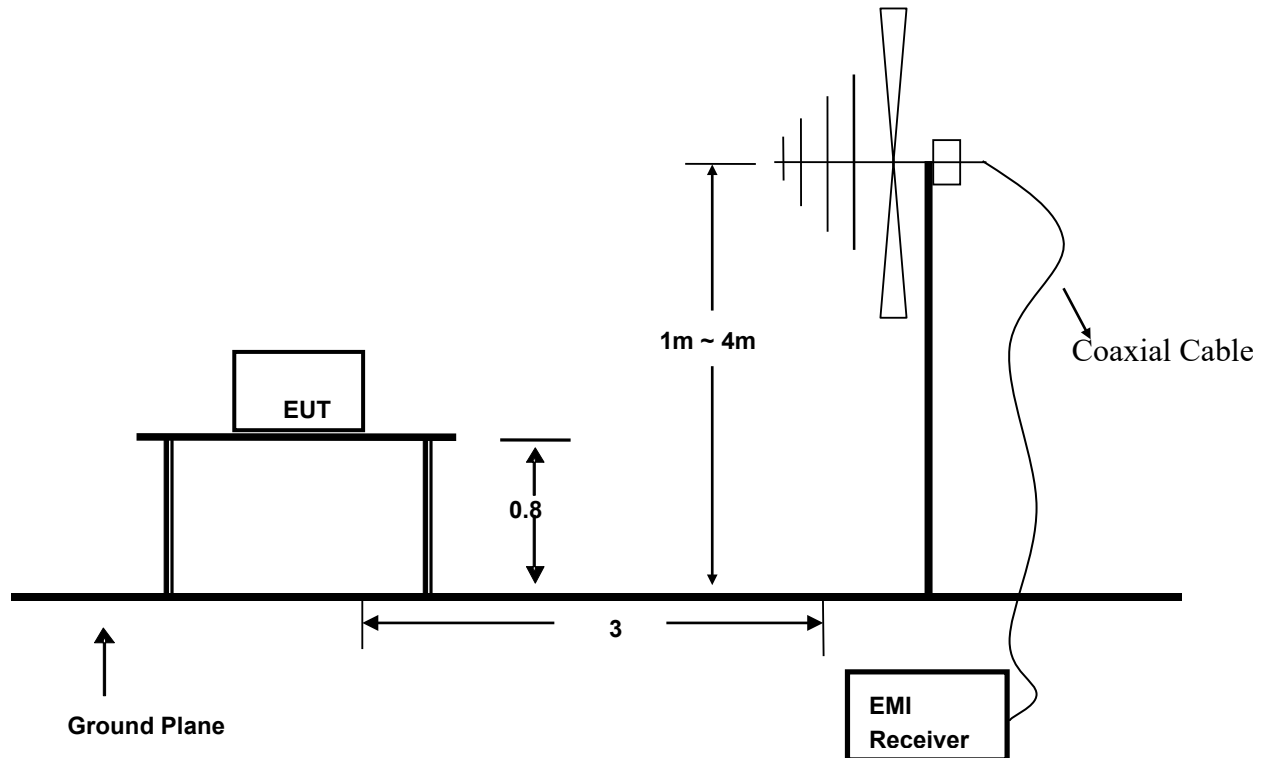
Item	Test Equipment	Manufacturer	Model No.	Serial No.	Last Cal.
1	Voltage dips and up generator	3CTEST	VDG-1105G	EC0171014	2024/06/18

3.14. Voltage Short Interruptions

Item	Test Equipment	Manufacturer	Model No.	Serial No.	Last Cal.
1	Voltage dips and up generator	3CTEST	VDG-1105G	EC0171014	2024/06/18

4. RADIATED EMISSION MEASUREMENT

4.1. Block Diagram of Test Setup



4.2. Test Standard

EN IEC 55014-1:2021 (EN 55032:2015/A11:2020)

4.3. Radiated Emission Limits

FREQUENCY (MHz)	DISTANCE (Meters)	FIELD STRENGTHS LIMIT (dB μ V/m)
30-230	3	40
230-1000	3	47

- Note: (1) The smaller limit shall apply at the combination point between two frequency bands.
 (2) Distance refers to the distance in meters between the measuring instrument antenna and the closed point of any part of the EUT.

4.4.EUT Configuration on Test

The EN 55032 regulations test method must be used to find the maximum emission during radiated emission measurement.

4.5.Operating Condition of EUT

4.5.1.Turn on the power.

4.5.2.After that, let the EUT work in test mode (ON) and measure it.

4.6.Test Procedure

The EUT is placed on a turntable, which is 0.8 meter high above the ground. The turntable can rotate 360 degrees to determine the position of the maximum emission level. The EUT is set 3 meters away from the receiving antenna, which is mounted on an antenna tower. The antenna can be moved up and down from 1 to 4 meters to find out the maximum emission level. By-log antenna (calibrated by Dipole Antenna) is used as a receiving antenna. Both horizontal and vertical polarization of the antenna is set on test.

The bandwidth of the Receiver is set at 120kHz.

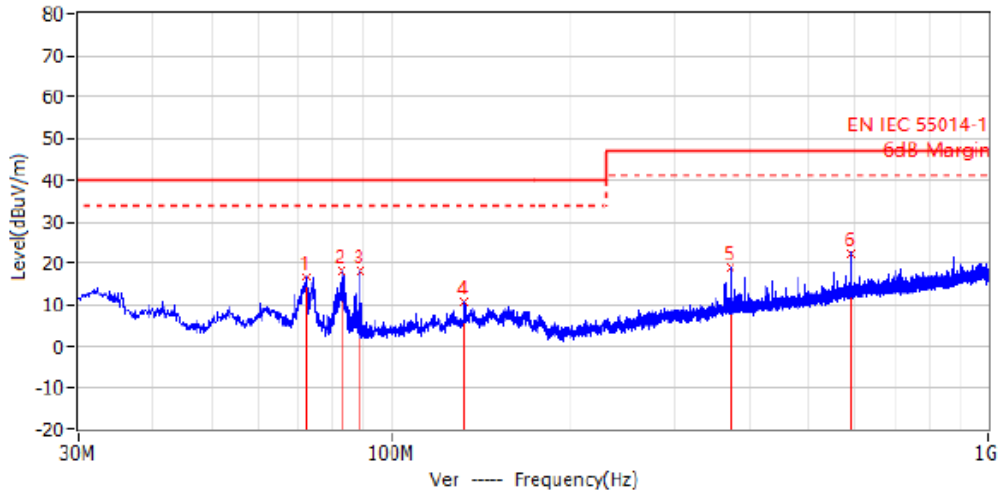
The frequency range from 30MHz to 1000MHz is investigated.

4.7.Test Results

PASS.

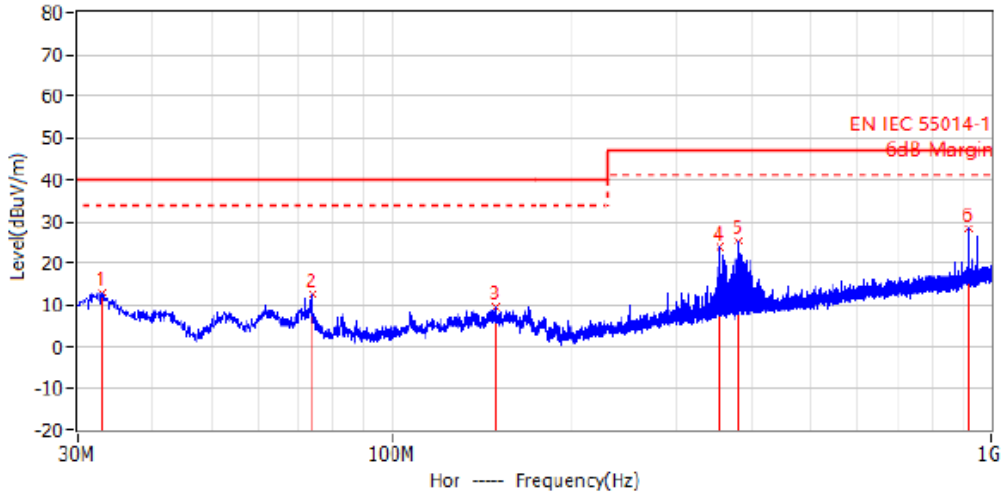
The scanning waveform please refer to the next page.

Model No.	85450001	Test Date	Feb. 22, 2025
Environmental Conditions	24°C/ 56% RH	Test Mode	ON
Pol	Vertical	Detector Function	Quasi-peak
Test Engineer	Kano	Distance	3m



No.	Frequency	Limit dBuV/m	Level dBuV/m	Delta dB	Reading dBuV	Factor dB/m	Detector	Polar	Height cm	Angle deg
1*	72.195MHz	40.0	16.7	-23.3	35.1	-18.4	PK	Ver	100.0	360.0
2*	82.986MHz	40.0	18.3	-21.7	40.3	-22.0	PK	Ver	100.0	0.0
3*	89.170MHz	40.0	18.1	-21.9	40.7	-22.6	PK	Ver	100.0	0.0
4*	132.820MHz	40.0	10.7	-29.3	29.5	-18.8	PK	Ver	100.0	275.0
5*	371.319MHz	47.0	19.0	-28.0	34.8	-15.8	PK	Ver	100.0	217.0
6*	590.539MHz	47.0	22.5	-24.5	33.7	-11.2	PK	Ver	100.0	0.0

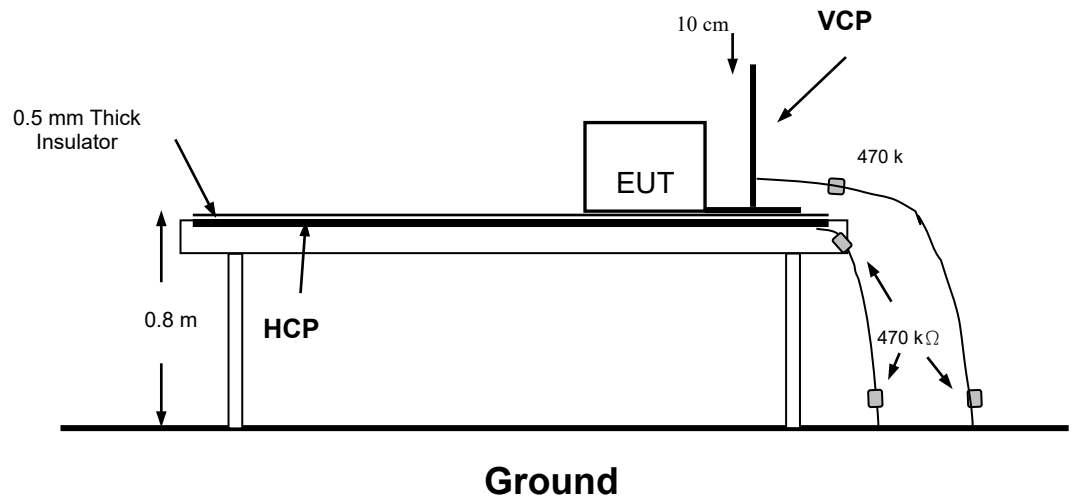
Model No.	85450001	Test Date	Feb. 22, 2025
Environmental Conditions	24°C / 56% RH	Test Mode	ON
Pol	Horizontal	Detector Function	Quasi-peak
Test Engineer	Kano	Distance	3m



No.	Frequency	Limit dBuV/m	Level dBuV/m	Delta dB	Reading dBuV	Factor dB/m	Detector	Polar	Height cm	Angle deg
1*	33.031MHz	40.0	12.9	-27.1	26.5	-13.6	PK	Hor	100.0	8.0
2*	74.014MHz	40.0	12.6	-27.4	31.8	-19.2	PK	Hor	100.0	223.0
3*	149.189MHz	40.0	9.7	-30.3	27.2	-17.5	PK	Hor	100.0	116.0
4*	353.980MHz	47.0	24.0	-23.0	40.2	-16.2	PK	Hor	100.0	274.0
5*	381.019MHz	47.0	25.4	-21.6	41.0	-15.6	PK	Hor	100.0	289.0
6*	921.430MHz	47.0	28.3	-18.7	34.4	-6.1	PK	Hor	100.0	308.0

5. ELECTROSTATIC DISCHARGE IMMUNITY TEST

5.1. Block Diagram of Test Setup



5.2. Test Standard

EN IEC 55014-1:2021

(EN 61000-4-2:2009, Severity Level: 3 / Air Discharge: ± 8 KV, Level: 2 / Contact Discharge: ± 4 KV)

5.3. Severity Levels and Performance Criterion

5.3.1. Severity level

Level	Test Voltage Contact Discharge (KV)	Test Voltage Air Discharge (KV)
1.	± 2	± 2
2.	± 4	± 4
3.	± 6	± 8
4.	± 8	± 15
X	Special	Special

5.3.2. Performance criterion: **B**

5.4. EUT Configuration on Test

The configuration of EUT are listed in Section 3.7.

5.5. Operating Condition of EUT

Same as conducted emission measurement, which is listed in Section 4.5 except the test set up replaced by Section 5.1.

5.6. Test Procedure

5.6.1. Air Discharge

This test is done on a non-conductive surface. The round discharge tip of the discharge electrode shall be approached as fast as possible to touch the EUT. After each discharge, the discharge electrode shall be removed from the EUT. The generator is then re-triggered for a new single discharge and repeated 10 times for each pre-selected test point. This procedure shall be repeated until all the air discharge completed.

5.6.2. Contact Discharge

All the procedure shall be same as Section 5.6.1. except that the tip of the discharge electrode shall touch the EUT before the discharge switch is operated.

5.6.3. Indirect Discharge For Horizontal Coupling Plane

At least 10 single discharges (in the most sensitive polarity) shall be applied at the front edge of each HCP opposite the center point of each unit (if applicable) of the EUT and 0.1m from the front of the EUT. The long axis of the discharge electrode shall be in the plane of the HCP and perpendicular to its front edge during the discharge.

5.6.4. Indirect Discharge For Vertical Coupling Plane

At least 10 single discharges (in the most sensitive polarity) shall be applied to the center of one vertical edge of the coupling plane. The coupling plane, of dimensions 0.5m X 0.5m, is placed parallel to, and positioned at a distance of 0.1m from the EUT. Discharges shall be applied to the coupling plane, with this plane in sufficient different positions that the four faces of the EUT are completely illuminated.

5.7. Test Results

PASS.

Please refer to the next page.

Electrostatic Discharger Test Results

Standard	<input type="checkbox"/> IEC 61000-4-2 <input checked="" type="checkbox"/> EN 61000-4-2		
Applicant	Hebei Young Will Health Technology Co., Ltd.		
EUT	Jelly Rabbit Vibrator	Temperature	23°C
M/N	85450001	Humidity	51%
Criterion	B	Pressure	1021mbar
Test Mode	Normal	Test Date	Feb. 22, 2025
Test Engineer	Kano		

Air Discharge						
Test Points	Test Levels			Results		
	± 2KV	± 4KV	± 8KV	Pass	Fail	Performance Criterion
Front	<input checked="" type="checkbox"/>	<input checked="" type="checkbox"/>	<input checked="" type="checkbox"/>	<input checked="" type="checkbox"/>	<input type="checkbox"/>	<input type="checkbox"/> A <input checked="" type="checkbox"/> B
Back	<input checked="" type="checkbox"/>	<input checked="" type="checkbox"/>	<input checked="" type="checkbox"/>	<input checked="" type="checkbox"/>	<input type="checkbox"/>	<input type="checkbox"/> A <input checked="" type="checkbox"/> B
Left	<input checked="" type="checkbox"/>	<input checked="" type="checkbox"/>	<input checked="" type="checkbox"/>	<input checked="" type="checkbox"/>	<input type="checkbox"/>	<input type="checkbox"/> A <input checked="" type="checkbox"/> B
Right	<input checked="" type="checkbox"/>	<input checked="" type="checkbox"/>	<input checked="" type="checkbox"/>	<input checked="" type="checkbox"/>	<input type="checkbox"/>	<input type="checkbox"/> A <input checked="" type="checkbox"/> B
Top	<input checked="" type="checkbox"/>	<input checked="" type="checkbox"/>	<input checked="" type="checkbox"/>	<input checked="" type="checkbox"/>	<input type="checkbox"/>	<input type="checkbox"/> A <input checked="" type="checkbox"/> B
Bottom	<input checked="" type="checkbox"/>	<input checked="" type="checkbox"/>	<input checked="" type="checkbox"/>	<input checked="" type="checkbox"/>	<input type="checkbox"/>	<input type="checkbox"/> A <input checked="" type="checkbox"/> B

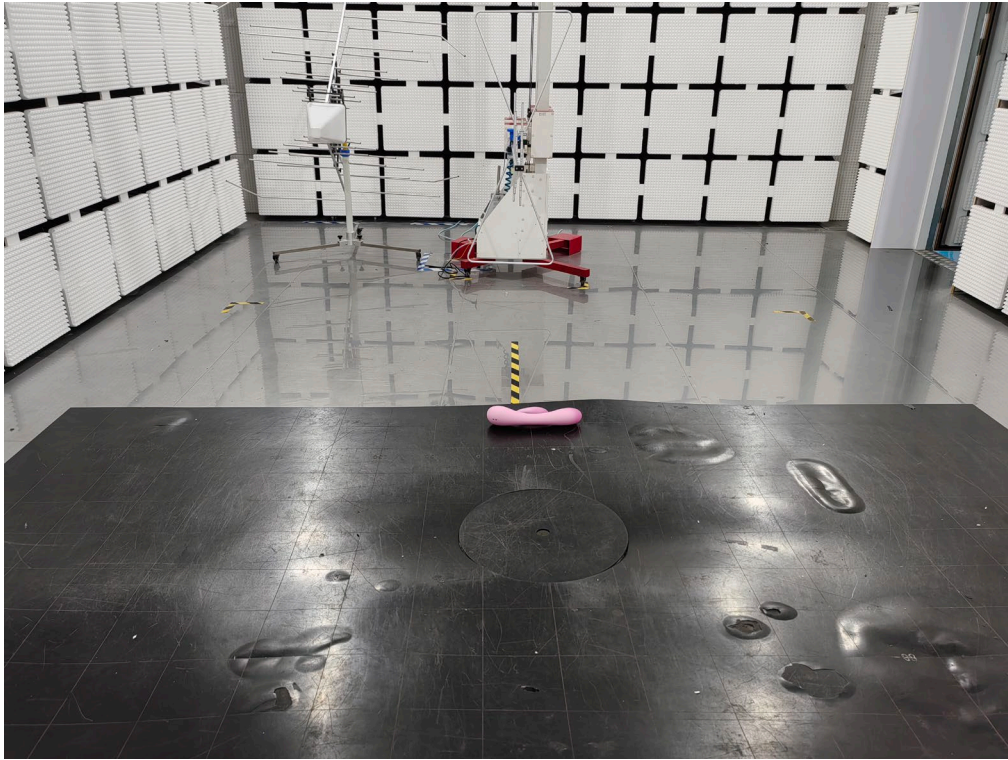
Contact Discharge					
Test Points	Test Levels		Results		
	± 2 KV	±4 KV	Pass	Fail	Performance Criterion
Front	<input checked="" type="checkbox"/>	<input checked="" type="checkbox"/>	<input checked="" type="checkbox"/>	<input type="checkbox"/>	<input type="checkbox"/> A <input checked="" type="checkbox"/> B
Back	<input checked="" type="checkbox"/>	<input checked="" type="checkbox"/>	<input checked="" type="checkbox"/>	<input type="checkbox"/>	<input type="checkbox"/> A <input checked="" type="checkbox"/> B
Left	<input checked="" type="checkbox"/>	<input checked="" type="checkbox"/>	<input checked="" type="checkbox"/>	<input type="checkbox"/>	<input type="checkbox"/> A <input checked="" type="checkbox"/> B
Right	<input checked="" type="checkbox"/>	<input checked="" type="checkbox"/>	<input checked="" type="checkbox"/>	<input type="checkbox"/>	<input type="checkbox"/> A <input checked="" type="checkbox"/> B
Top	<input checked="" type="checkbox"/>	<input checked="" type="checkbox"/>	<input checked="" type="checkbox"/>	<input type="checkbox"/>	<input type="checkbox"/> A <input checked="" type="checkbox"/> B
Bottom	<input checked="" type="checkbox"/>	<input checked="" type="checkbox"/>	<input checked="" type="checkbox"/>	<input type="checkbox"/>	<input type="checkbox"/> A <input checked="" type="checkbox"/> B

Discharge To Horizontal Coupling Plane					
Side of EUT	Test Levels		Results		
	± 2 KV	± 4 KV	Pass	Fail	Performance Criterion
Front	<input checked="" type="checkbox"/>	<input checked="" type="checkbox"/>	<input checked="" type="checkbox"/>	<input type="checkbox"/>	<input type="checkbox"/> A <input checked="" type="checkbox"/> B
Back	<input checked="" type="checkbox"/>	<input checked="" type="checkbox"/>	<input checked="" type="checkbox"/>	<input type="checkbox"/>	<input type="checkbox"/> A <input checked="" type="checkbox"/> B
Left	<input checked="" type="checkbox"/>	<input checked="" type="checkbox"/>	<input checked="" type="checkbox"/>	<input type="checkbox"/>	<input type="checkbox"/> A <input checked="" type="checkbox"/> B
Right	<input checked="" type="checkbox"/>	<input checked="" type="checkbox"/>	<input checked="" type="checkbox"/>	<input type="checkbox"/>	<input type="checkbox"/> A <input checked="" type="checkbox"/> B

Discharge To Vertical Coupling Plane					
Side of EUT	Test Levels		Results		
	± 2 KV	± 4 KV	Pass	Fail	Performance Criterion
Front	<input checked="" type="checkbox"/>	<input checked="" type="checkbox"/>	<input checked="" type="checkbox"/>	<input type="checkbox"/>	<input type="checkbox"/> A <input checked="" type="checkbox"/> B
Back	<input checked="" type="checkbox"/>	<input checked="" type="checkbox"/>	<input checked="" type="checkbox"/>	<input type="checkbox"/>	<input type="checkbox"/> A <input checked="" type="checkbox"/> B
Left	<input checked="" type="checkbox"/>	<input checked="" type="checkbox"/>	<input checked="" type="checkbox"/>	<input type="checkbox"/>	<input type="checkbox"/> A <input checked="" type="checkbox"/> B
Right	<input checked="" type="checkbox"/>	<input checked="" type="checkbox"/>	<input checked="" type="checkbox"/>	<input type="checkbox"/>	<input type="checkbox"/> A <input checked="" type="checkbox"/> B

6. PHOTOGRAPH

Photo of Radiated Measurement



7. EXTERNAL AND INTERNAL PHOTOS OF THE EUT

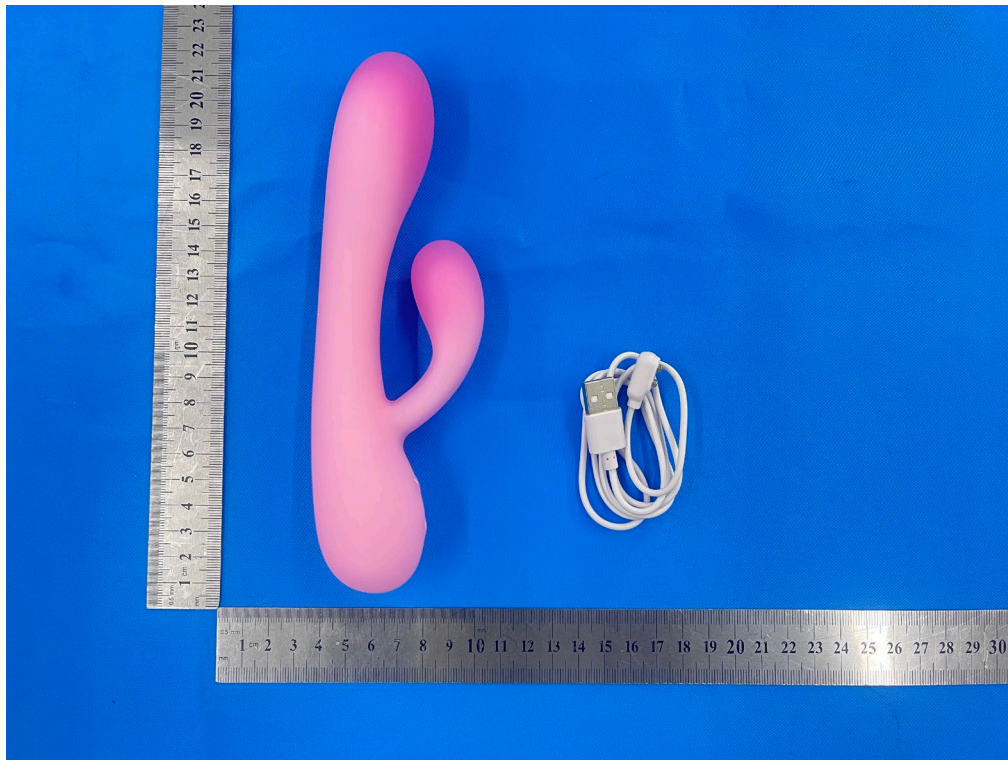


Fig 1

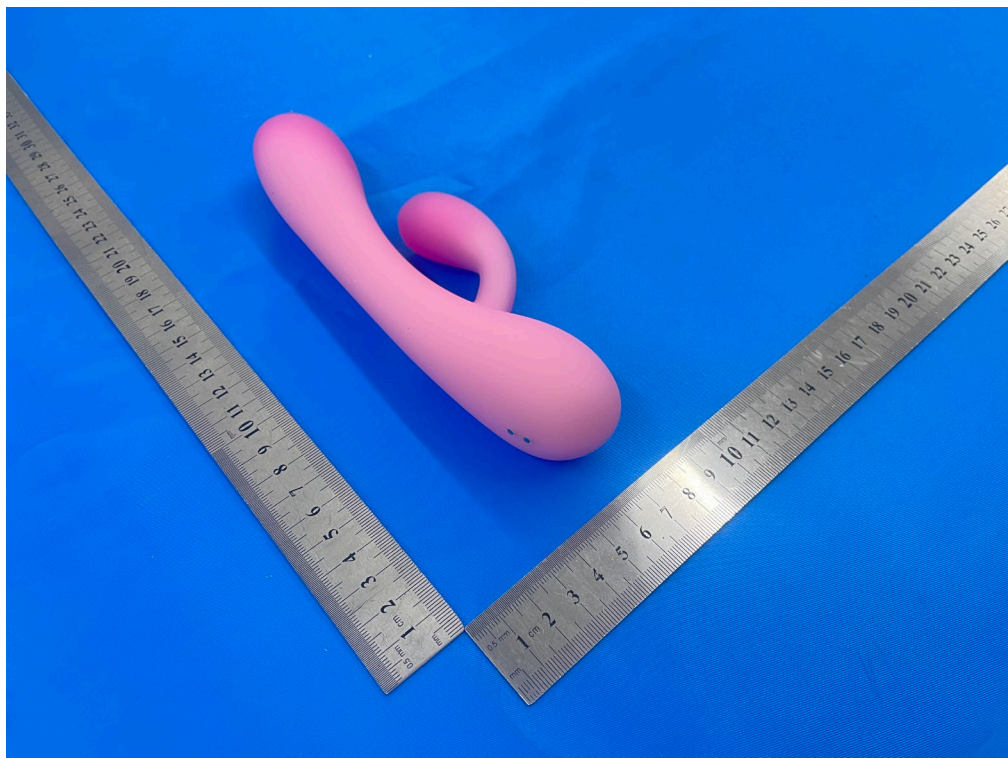


Fig 2

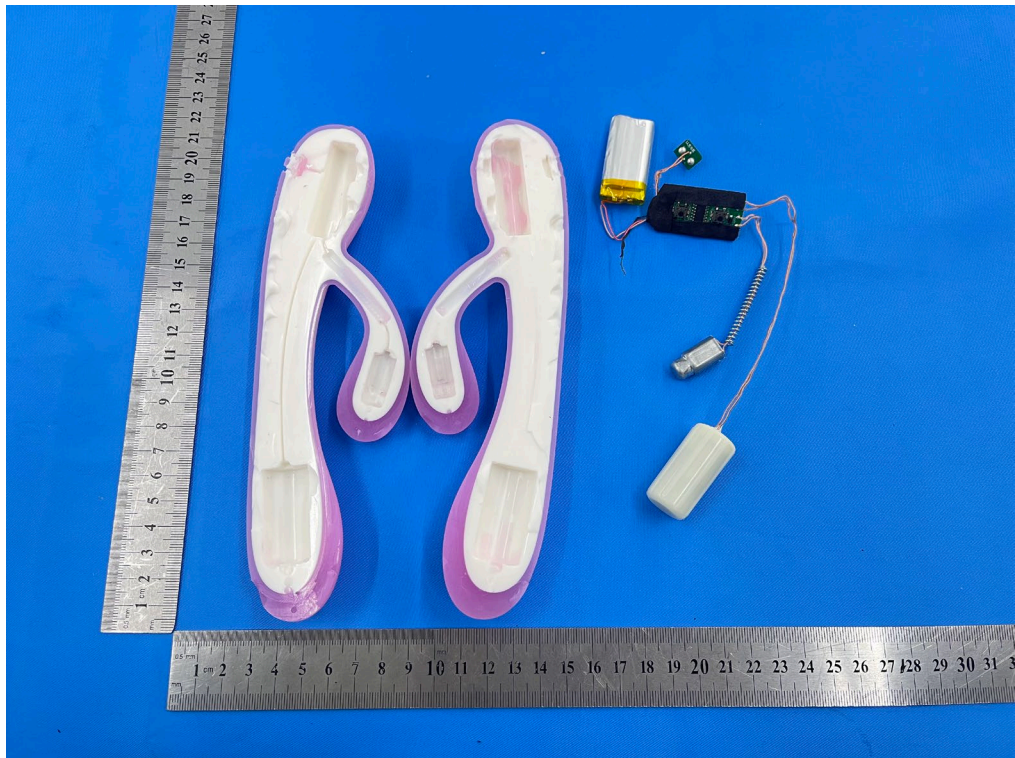


Fig 3

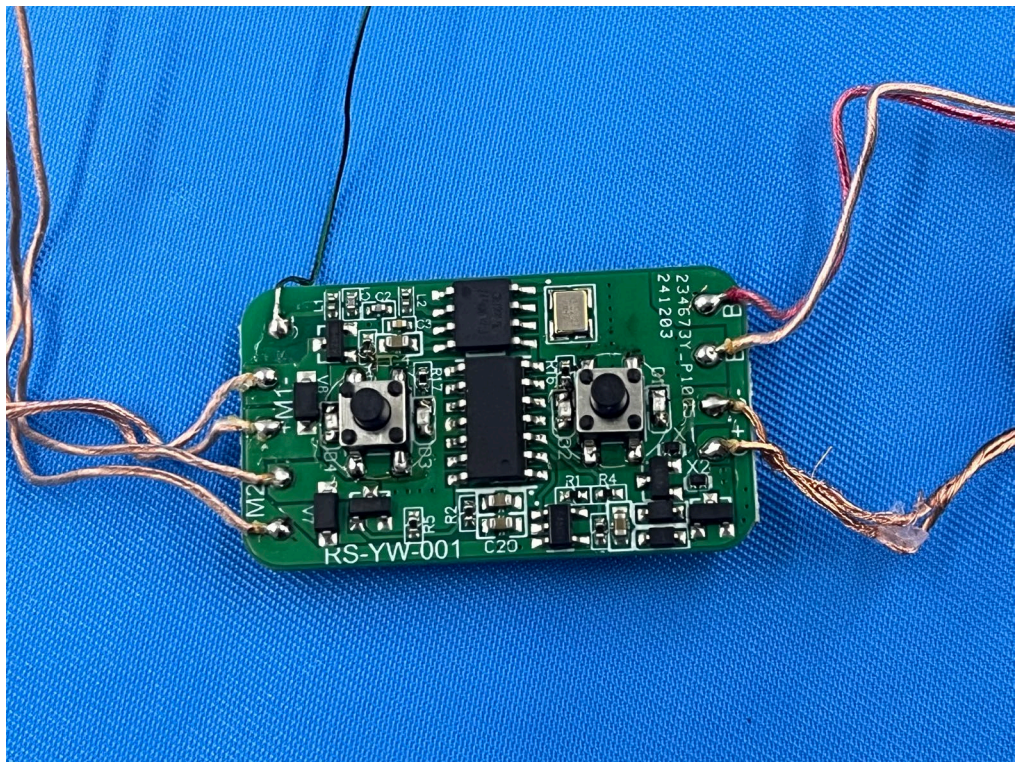


Fig 4

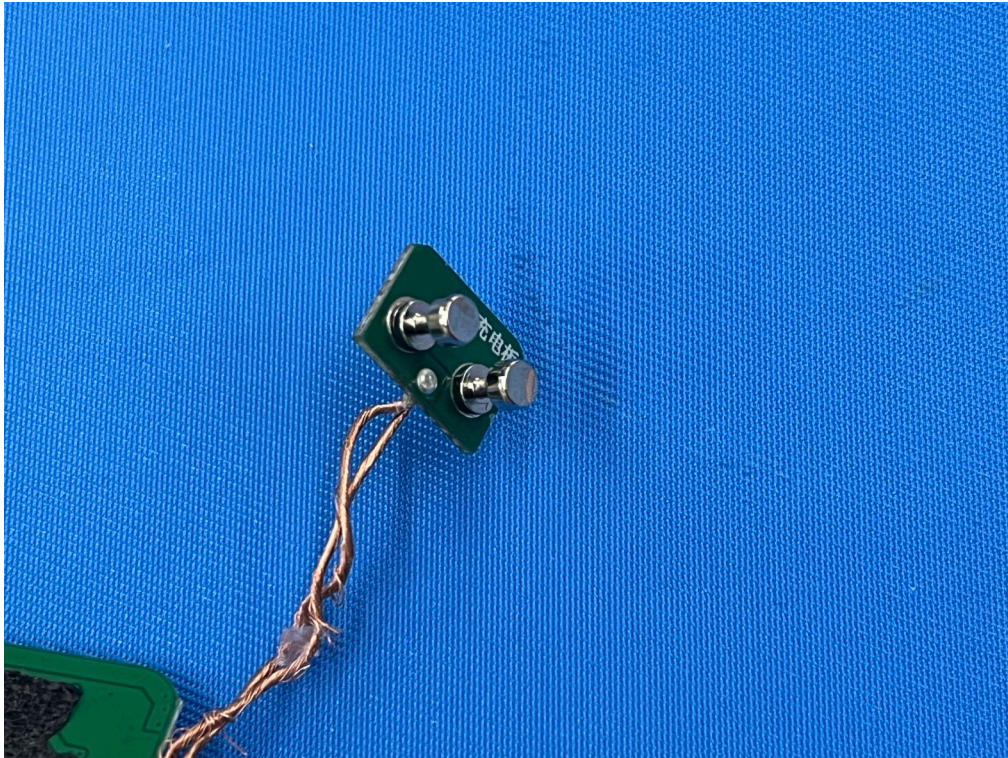


Fig 5

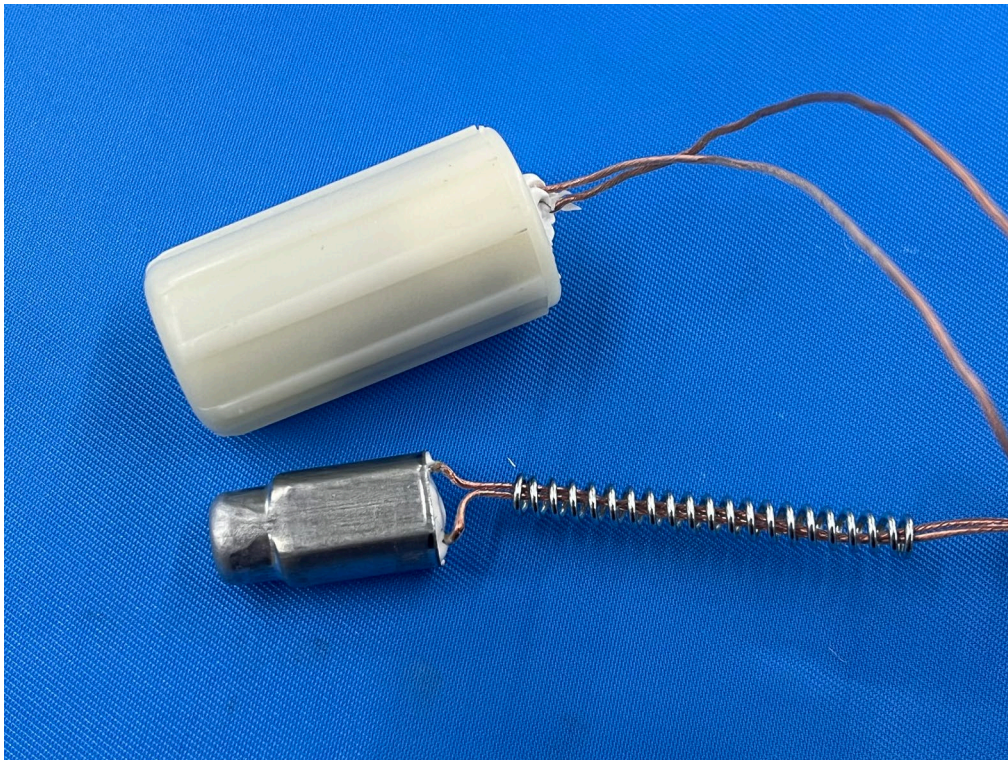


Fig 6



Fig 7

8. MANUFACTURER/ APPROVAL HOLDER DECLARATION

The following identical model(s):

---	---	---	---
-----	-----	-----	-----

Belong to the tested device:

Product description : Jelly Rabbit Vibrator
Model name : 85450001

Remark: PCB board, structure and internal of these model(s) are the same,
So no additional models were tested.

-----THE END OF REPORT-----